

Range Highlights

EH22

All season road tyre with excellent handling in wet and dry conditions.



Comfort



Innovative tread design provides excellent vibration absorbing characteristics to ensure a comfortable ride.

Low Noise



Computerised tread pattern development to achieve an optimal combination of different variably pitched block patterns designed to minimise noise.

Safety

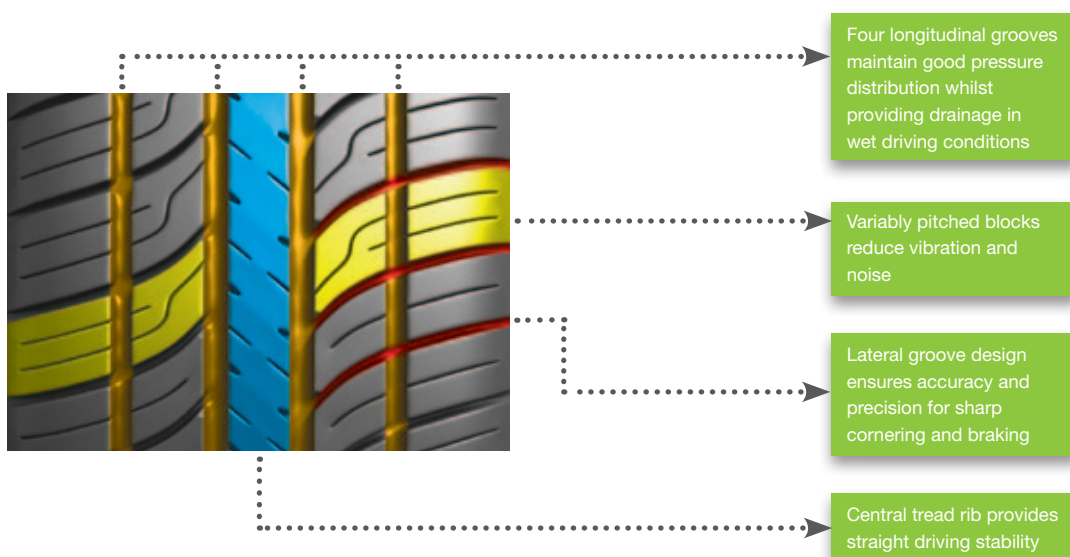


Four longitudinal grooves serve as an effective drainage solution whilst maintaining good pressure distribution to ensure excellent handling in wet conditions.

Handling



The central tread rib ensures straight driving stability whilst the lateral groove design extends to the shoulder of the tyre to provide accuracy and precision when cornering.



Range Highlights

EH23

High performance radial tyre designed for maximum comfort and to provide excellent handling in wet and dry conditions.



Comfort



The diverse distribution of pattern blocks increases flexibility and enhances the tyre's dampening functions leading to a more comfortable drive.

Low Noise



Small pattern blocks with a high density of distribution offsets the noise generated as air is emitted from the tread area. The irregular arrangement of the pattern blocks acts to reduce noise generated from vibrations.

Wet Weather Grip

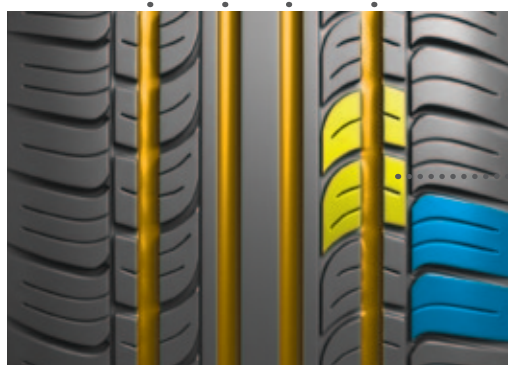


The four longitudinal grooves across the width of the tread area ensures superior water dissipation when driving in wet conditions, whilst the silica based compound provides good grip on wet roads.

Handling



The solid centre rib increases the operating and braking performance significantly by providing enhanced adhesion to the road whilst maintaining good stability. The optimised tread block layout provides excellent manoeuvrability whilst increasing rotary power and braking capabilities.



Four longitudinal grooves maintain good pressure distribution whilst providing drainage in wet driving conditions

Tread block designed to minimise noise

Tread block designed for optimised rotary power and braking capabilities

Range Highlights

ES82

High performance pattern for road-going 4x4 vehicles. Designed for maximum endurance and minimal noise.



Low Noise



The precision tread pattern pitch design and high density of small grooves work effectively to minimise noise generation.

Cross Country Performance



The Large longitudinal grooves and multi-angled tread blocks are designed to maximise pressure balance and provide good grip both on and off-road.

Wet Weather Grip

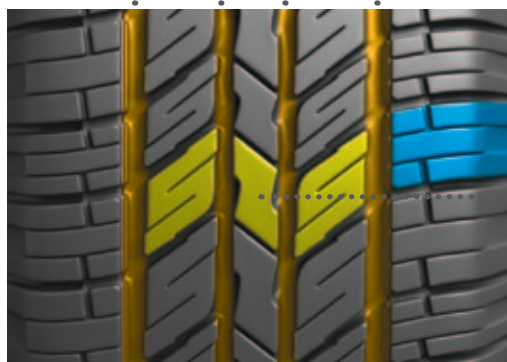


The four longitudinal grooves across the width of the tread area ensure superior water dissipation when driving in wet conditions.

Handling



The wide central strip provides good on-road handling whilst the tyre's lateral rigidity is designed to provide excellent handling in off-road conditions.



Four longitudinal grooves maintain good pressure distribution whilst providing drainage in wet driving conditions

Wide central strip provides good on-road handling

Tread block design designed to minimise noise

Range Highlights

EU72

A tyre designed for optimal handling. The silica based compound provides low rolling resistance and excellent fuel economy.



Handling



The advanced asymmetrical pattern and strong central rib provide excellent handling, quick braking response, and superb cornering performance. Strong lateral rigidity provides precise control when cornering.

Grip



The sophisticated tread design provides excellent water dissipating qualities to ensure reliable grip in wet conditions whilst the wide central strip provides good traction in dry conditions.

Low Noise



Advanced tread block positioning designed for minimal noise generation.

Economical



The advanced silica based compound provides low rolling resistance and therefore reduces the vehicle's fuel consumption and emissions. The tread area is designed for even wear to maximise the life of the tyre.



Good handling and quick braking response

Tread block designed to minimise noise

Small steps in shoulder tread to provide lateral rigidity and precise cornering qualities